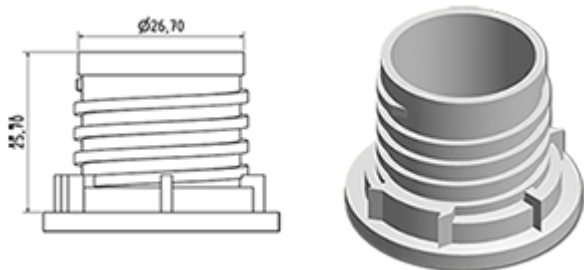


The dosing system is set on an inviolable cap. At the first use, the dosing-system goes on the bottle. At the first use, the sealing-ring breaks and the screwing cap dissociates on itself from the dosing-system. You only have to press on the side of the bottle to dose and then to pour the product. Once the bottle is empty, as the dosing system makes one piece with the cap, the entire part comes out of the bottle neck what makes the filling of the bottle easier. Once the bottle is filled, you only have to insert the dosing system once again.

General Information

- Ordering numbers : DOSY EC 040BLA
- Weight : 11.00 gr
- Color : white
- Dimensions : diameter 38 mm / height 300 mm

Neck : G141



Standard packaging :

- 500 pcs per box
- Dimensions : 60 x 40 x 31 cm
- Gross weight : 6.28 Kg

Photo



Material

Pos	description	Material
1	Cap	HDPE
2	Tube	PP
3	Tube	PP

