

The MAXI sprayer is a professional high-performance model with a very high output of 2.2 ml per stroke. The MAXI has an extremely robust construction, designed for constant use over a long period. It has a long contoured three-finger trigger for effort-free operation. The trigger surface is textured for an easy grip even with wet or gloved hands.

The nozzle is fully adjustable from a fine mist to a direct jet. A foamer nozzle is also available. The diptube filter is fitted as standard.

The Maxi is recommended for professional, industrial and janitorial use and for all applications where a large quantity of product sprayed is required.

General Information

- Ordering numbers : MAXI JTBS245BVER
- Spraying capacity : 2.2 ml
- Weight : 38.00 gr
- Color :
- Tube length : 245 mm

Neck : 28/400



Standard packaging :

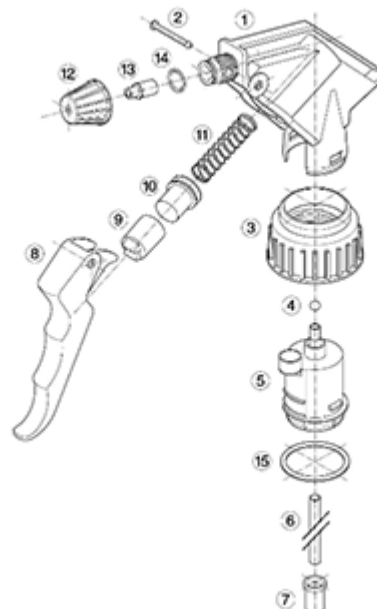
- 400 pcs per box
- Dimensions : 57 x 39 x 55 cm
- Gross weight : 16.45 Kg

Photo



Exploded View

| Pos | description | Material |
|-----|---------------|---------------|
| 1 | Body | PP |
| 2 | Rivet | POM |
| 3 | Ring | PP |
| 4 | Ball | st. steel 302 |
| 5 | Connection | PP |
| 6 | Tube | PE |
| 7 | Filter | PP |
| 8 | Trigger | PP |
| 9 | Washer holder | PP |
| 10 | Washer | NBR |
| 11 | Spring | st. steel 302 |
| 12 | Nozzle | PP |
| 13 | Valve | POM |
| 14 | O-ring | NBR |
| 15 | Seal | PE/EPE |



Media

